



Instruction manual



Refrigerator for milk and syrups C4

TABLE OF CONTENTS

1. DECLARATION OF CONFORMITY	3
2. TECHNICAL DATA	3
3. LOCATION ELECTRIC	3
4. SAFETY MEASURES FOR FIRE PROTECTION	3
5. INSTALLATION	4
6. CONNECTING THE ELECTRICAL CABLE TO THE NETWORK	4
7. CLEANING AND MAINTENANCE	13

1. DECLARATION OF CONFORMITY

The above-mentioned product complies with the following standards: Decree of the Ministry of Health No. 38/2001 Coll., Regulation 1907/2006/EC – REACH Regulation, 1935/2004/EC – Food contact regulation. Výrobky splňují požadavky §26 zákona č.258/2000 v platném znění. Výrobky splňují požadavky směrnice RoHS 2011/65/EU.

Attention, the manufacturer gives up any responsibility in case of direct and indirect damage that is relate to poor installation, incorrect intervention or adjustments, insufficient maintenance, incorrect by using and which are eventually caused by other causes that the points referred to in the conditions sales. This appliance is intended only for professional use and must be operated by qualified by persons. Parts that have been secured by the manufacturer or authorized worker after the setting rebuild.

2. TECHNICAL DATA

The label with technical data is located on the side or back panel of the device. Please read the wiring diagram and all the following information in the attached manual before installation.

Net Width [mm]	Net Depth [mm]	Net Height [mm]	Net Weight [kg]	Power electric [kW]	Loading
220	454	454	14.70	0.500	220-240 V/ 50-60 Hz

3. LOCATION ELECTRIC

For the correct operation and placement of the appliance, it is necessary to observe the following all prescribed standards for the given market. Unpack the device and check that the device has not been damaged during transport. Place the device on a horizontal surface (maximum unevenness up to 2°). Small unevenness can be leveled with adjustable feet. If the device will be placed in such a way that it will be in contact with the walls of the furniture, these must withstand a temperature of up to 60°C. Installation, adjustment, commissioning must be performed by a qualified person who is authorized to perform such operations, according to applicable standards. The device can be installed separately or in series with devices of our production. A minimum distance of 10 cm from flammable materials must be observed. In this case, it is necessary to secure the appropriate modifications to ensure the thermal insulation of the combustible parts. The appliance must only be installed on a non-flammable surface or against a non-flammable wall. **Parts of the appliance provided by the manufacturer. or his representative, the worker performing the installation may not rebuild the product.**

4. SAFETY MEASURES FOR FIRE PROTECTION

- the appliance may only be operated by adults
- the appliance may be used safely in accordance with applicable market standards:

Fire protection in spaces with special risk or danger

Protection against the effects of heat

- the appliance must be placed so that it stands or hangs firmly on a non-combustible surface

Objects of flammable substances must not be placed on the appliance at a distance less than a safe distance from it (the smallest distance between the appliance and flammable substances is 10 cm).

Table: degree of flammability of building materials included in st. flammability of substances and products

Degree of flammability	Building materials
A - non-flammable	granite, sandstone, concrete, brick, ceramic tiles, plaster
B - Not easily flammable	Acumin, Heraclitus, Lihnos, Itaver
C1 - highly flammable	wood, hardwood, plywood, hard paper, umakart
C2 - moderately flammable	chipboards, solodur, cork boards, rubber, flooring
C3 - Highly flammable	wood fiber boards, polystyrene, polyurethane, PVC

- information on the degree of flammability of common building materials is given in the table above. Appliances must be installed in a safe manner. During installation, the relevant design, safety and hygiene regulations must also be respected:
- fire safety of local appliances and heat sources
- fire protection in areas with special risk or danger
- protection against the effects of heat

5. INSTALLATION

Important: The manufacturer does not provide any warranty for defects arising as a result of incorrect use, failure to follow the instructions contained in the attached user manual and mishandling of appliances. Installation, modification and repair of appliances for large kitchens, as well as their dismantling due to possible damage to the gas supply, can only be carried out on the basis of a maintenance contract, this contract can be concluded with an authorized dealer, while technical regulations and standards and regulations must be observed regarding installation, electrical supply, gas connection and work safety. Technical instructions for installation and adjustment, for use by specialized technicians ONLY. The instructions that follow refer to a technician qualified for installation to carry out all operations in the most correct manner and according to the applicable standards. Any activity related to regulation etc. must only be performed with the device disconnected from the network. If it is necessary to keep the appliance under voltage, the utmost care must be taken. The type of appliance for extraction is declared on the nameplate, it is an A1 appliance.

6. CONNECTING THE ELECTRICAL CABLE TO THE NETWORK

Installation of the electrical supply - this supply must be separately secured. Ato with the corresponding circuit breaker of rated current depending on the power input of the installed device. Check the power consumption of the device on the production label on the back panel (or side) of the device. The connected ground wire must be longer than the other wires. Connect the device directly to the network, it is necessary to insert a switch between the device and the device with a minimum distance of 3 mm between the individual contacts, which corresponds to the applicable standards and load. The earth supply (yellow-green) must not be interrupted by this switch. Connect the device to the mains if the socket has adequate protection. In any case, the supply cable must be located so that it does not reach a temperature of 50 degrees higher than the environment at any point. Before the appliance is connected to the network, it is necessary to first make sure that:

- the supply circuit breaker and the internal distribution can withstand the current load of the appliance (see matrix label)
- the distribution board is equipped with effective grounding according to the standards of the relevant market and the conditions given by law
- the socket or switch in the supply is easily accessible from the appliance
- the electrical supply to the device must be made of oil-resistant material

We disclaim any responsibility in the event that these standards are not respected and in the event of a violation of the above principles. Before first use, you must clean the device, see chapter "cleaning and maintenance". The appliance must be grounded using a screw with a grounding mark.

- Do not insert the plug of the power supply into the electrical outlet. sockets and do not pull out the zel. sockets with wet hands and pulling on the power cord!
- Do not use extension cords or multiple sockets.
- **The mains connection point must have a maximum of the following impedance: $Z_{MAX} = 0.042 + j 0.026 \Omega$ for the phase conductors and $0.028 + j 0.017 \Omega$ for the neutral conductor.**

Correct use

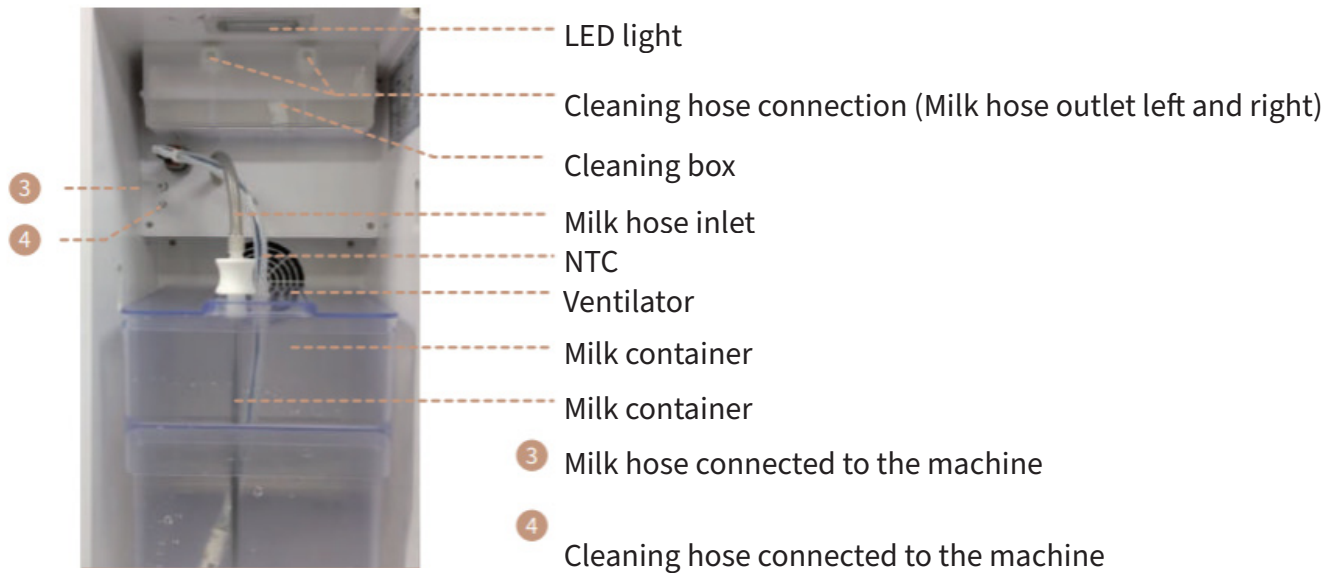
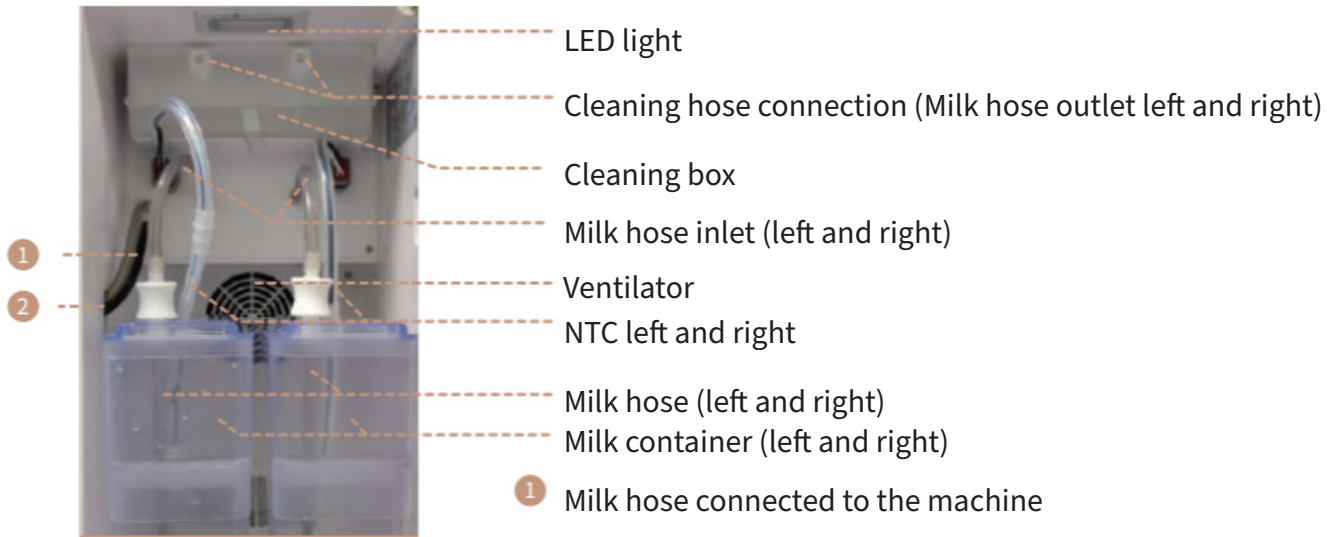
- Please read the user manual carefully before use.

- The appliance is designed to provide various milk-based beverages and is intended for use in food establishments, offices, hotels, convenience stores and other similar environments.
- The milk cooling model can be recognized by our coffee machine automatically when the milk cooler is connected to our coffee machine. If you would like to connect the milk cooler to your own coffee machine, please contact customer service for assistance.
- The appliance is intended for indoor use, but is not suitable for outdoor use.
- Do not use the appliance if you are not familiar with the various functions.
- Do not use the appliance if it has not been cleaned.
- Children aged from 18 years and persons with reduced physical, sensory or mental capabilities or lack of experience and knowledge are not allowed to use the appliance unless they have been given supervision or instruction concerning use of the appliance.
- Children must not play with the appliance
- We recommend a thorough cleaning after it has been switched off for a few days.

The manufacturer is not liable for damage caused by improper use and is not responsible for installation or cleaning errors caused by improper operation.

Description

A complete sample configuration is shown below. Please note that your milk cooler may look different from the configuration shown here. Please refer to the specific installation page.



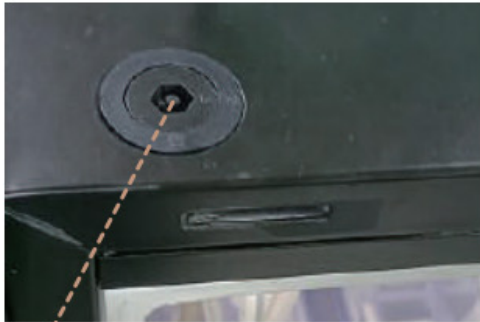
C4



Power Connection

Coffee Machine Connection

Optional



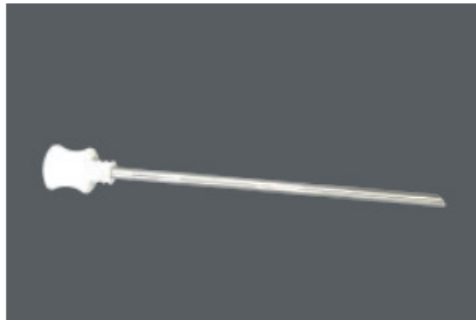
Lockable



Power cable for connecting the milk cooler to the power supply



Power cable for connecting the milk cooler to the coffee machine (available for one device, additional connector is optional)



Milk hose
(C 22 with two milk hoses
C 4 with one milk hose)



NTC milk container
(C 22 with dual NTC
C 5 with single NTC)



Milk container

Raw materials and refrigerants

The surface of the internal and external objects in direct contact must be made of galvanized, aluminum or non-toxic plastic. The refrigerant must be used in accordance with relevant government regulations. The type of refrigerant and the amount of liquid to be filled can be found in the parameter table.

Note: This product uses R600a refrigerant and cyclopentane, maintenance must be specified by the manufacturer or professionally trained personnel. Be careful of fire!

Instructions for refrigerating appliances and ice makers must include:
the substance of the following:

WARNING: When positioning the appliance, ensure that the power cord is not trapped or damaged.

WARNING: Do not locate multiple portable sockets or portable power supply sockets on the back of the appliance.

Appliances that use flammable insulating gases must have instructions that include information on how to dispose of the appliance.

Technical data:

Item	Parameter
Voltage/Frequency	220-240V 50/60 Hz
Climate type	3, 4, 5
Current	0,5 A
Luminous power	0,5 W
Refrigerant	R600a/10,8 g
Foam material	Cyclopentane
One milk container	5 L
Double milk container	2L/Box
Milk container material	Food grade ABS
Refrigerant	CFC-free refrigerant
Evaporator	Air-cooled fin evaporator
Condenser	Wire and tube capacitor
Temperature range	Milk cooling temperature 0~4 °C
Noise	47dB
Net weight	16 kg

Climate type 3,4,5: The machine can be used normally under the conditions below. Temperature between 25°C-40°C and humidity between 40%-60%.

Both the inner and outer surfaces are made of galvanized, aluminum or non-toxic plastic.

The refrigerant must be used in accordance with relevant government regulations.

The type of refrigerant must strictly comply with the technical data.

This product uses refrigerant R600a and cyclopentane, do not dispose of the device as waste. Please use separate recycling of the device. Contact your local government for information on available recycling

systems.

Installation location

- The installation location must be dry and protected from splashing water.
- The device must be installed on a solid, flat and heat-resistant surface.
- The ambient temperature must not exceed 40°C.
- The mains connection must correspond to the voltage, current and frequency indicated on the device label.
- When unpacking and transporting, keep it horizontal and contact us, the supplier, if you find any damage.
- The product must be placed in a dry, ventilated room, away from heat sources such as radiators, air conditioning heat pipes.
- If the power cord is damaged, it must be replaced by the manufacturer or a similarly qualified person in order to avoid a risk to life.



1. Insert the milk hose (gray) and the cleaning hose (black) into the milk cooler



2. The upper one is connected to the milk hose and the lower one is connected to the cleaning hose



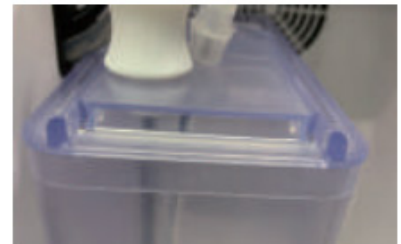
3. Insert the NTC



4. Connect the milk hoses (input)



5. Insert the NTC and the integrated milk tube into the milk container lid



6. Place the milk container back



7. Connect the cable to the coffee machine



8. Connect the cable to the milk cooler (other connector is optional)



9. Connect the device to power

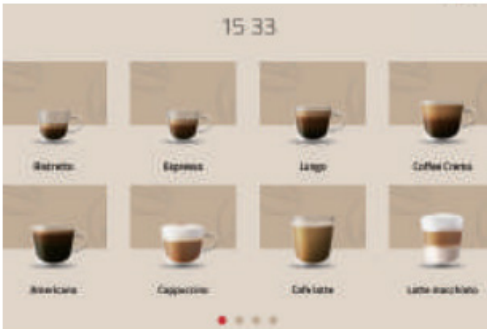


10. Enter the coffee machine menu, select System-Accessory-Milk cooler and install the milk cooler according to the instructions



11. Choose the type of milk

Preparation of drinks



Select the milk-based drink icon, e.g. cappuccino, to start the drink preparation.



Cleaning and maintenance

Before cleaning the device, you must disconnect the power supply and then pull out the mains plug.

- When disconnecting the power, do not pull the power cord forcibly.
- When cleaning the device, do not use sharp objects. Instead, use a dry cloth and neutral detergent.
- At least once a month, clean the condenser with a vacuum cleaner or brush to clean the dust inside.
- Do not clean the device directly under water.
- Before replacing the LED light, it is necessary to disconnect the power supply, which also needs to be carried out or instructed by professional personnel.
- Maintenance of the refrigerant must be carried out by authorized personnel of the manufacturer or a professional technician. Pay attention to fire safety.
- Dispose of old devices in an environmentally neutral manner.
- Select the filling pipe to use the syrup function again.
- Before maintenance, be sure to check whether the power cord is not aging, the component in the milk cooler is working smoothly, and the refrigerant is leaking.

The recommended maintenance frequency is once a month.

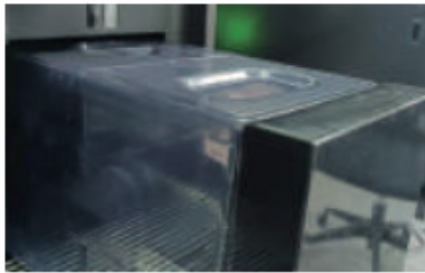
- If you will not use the milk cooler for a long time, unplug the power plug and clean the inside of the milk cooler.

Water condensation on the door is normal when the humidity is above 55%.

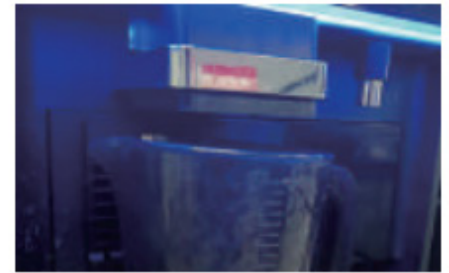
Cleaning and maintenance of the milk cooler must be carried out in conjunction with the coffee machine. For details, please contact customer service.



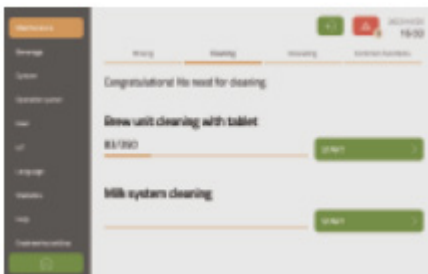
1. Install the milk cooler on the coffee machine first



2. Remove the water tank and fill the water tank with fresh water to the maximum level, then place the rear water tank



3. If the automatic drainage system is not connected, we recommend placing another large cup under the coffee spout



4. Select Menu Maintenance-Cleaning-Milk system cleaning



5. Follow the instructions on the display, the total duration is approx. 10 min



Cleaning and maintenance of C4 is the same as C22

Troubleshooting

You can try to fix some common errors yourself as listed below. Other serious problems require you to contact customer service or a technician.

No connection

- Check if the power is connected
- Check if the circuit is normal
- Check if the milk cooler is not installed correctly

Temperature too high

- Check the temperature setting
- Check if the door is closed properly
- Check if the indoor fan is working normally
- Check and clean the condenser

Noise

- Check that the device is placed horizontally
- Check that the device is connected directly to another device and is not causing vibration

Due to continuous updates and improvements, your milk cooler may not match the introduction of this user manual.

Simply use it as the performance of the device will not be affected.

If you have any questions, please contact our customer service for assistance.

7. CLEANING AND MAINTENANCE

It is recommended to have the device checked with a specialist service at least once a year. All the interventions in the device can only be carried out by a qualified person who has the authorization to do so. **CAUTION!** The device must not be cleaned with direct or pressure water. Clean the equipment daily. Daily maintenance extends the life and efficiency of the equipment. Always turn off the main inlet to the device. Wash the stainless steel parts with a damp cloth with a detergent without coarse particles and wipe dry. Do not use abrasive or corrosive cleaning agents. Attention! Before using the device, it is necessary to remove the protective foil from the entire surface, and then wash it well with water with detergent, and then wipe it with a damp cloth. **ALERT!** The warranty does not apply to all consumables subject to normal wear (rubber seals, bulbs, glass and plastic parts, etc.). The warranty also does not apply to the device if the installation is not carried out in accordance with the instructions - an authorized worker according to the corresponding standards and if the equipment was unprofessionally manipulated (interventions in the internal equipment, etc.) or were operated by unhappy staff and contrary to the instructions for use, further The warranty does not apply to damage by natural effects or other external intervention. **Required service organization 2 times a year. After the lifetime, the shipping packaging and equipment are submitted to the collection, according to the regulations on waste management and hazardous waste.**